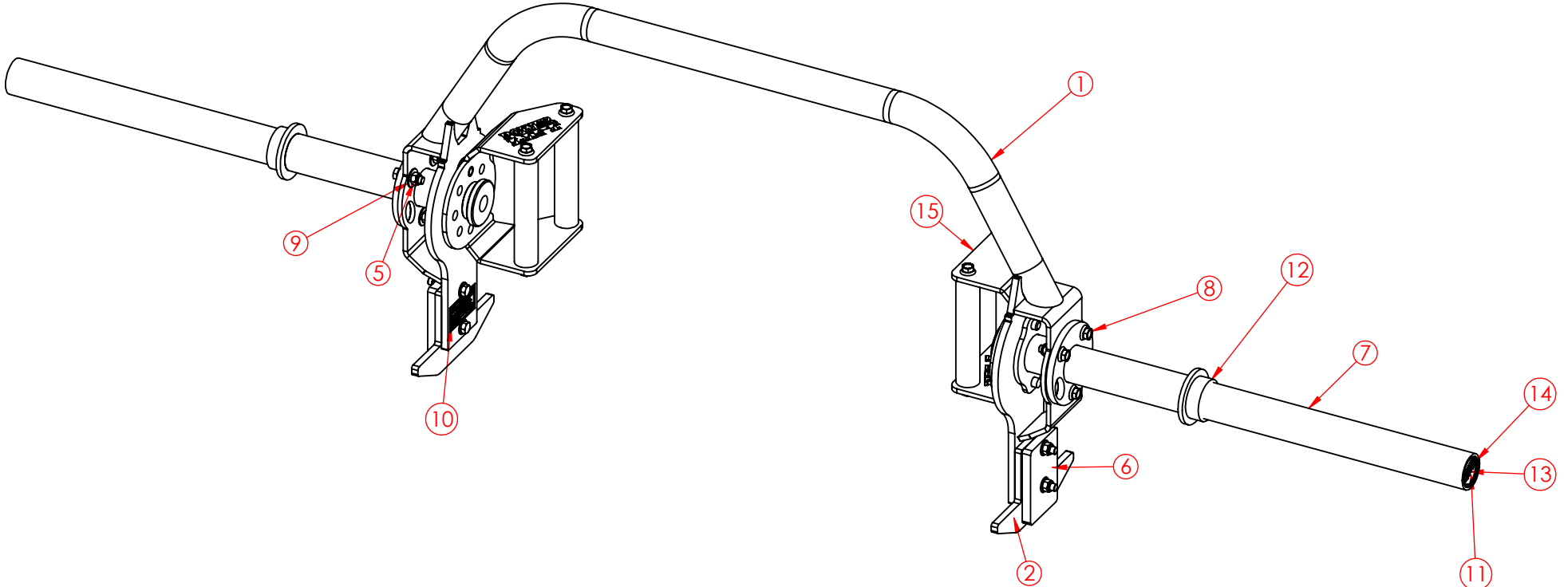


THE INFORMATION CONTAINED IN THIS DRAWING IS THE SOLE PROPERTY OF POWER LIFT ANY REPRODUCTION IN PART OR WHOLE WITHOUT THE WRITTEN PERMISSION OF POWER LIFT IS PROHIBITED

REV.	DESCRIPTION	DATE	APPROVED
A	INITIAL RELEASE	3/22/2024	TW
B	ADJUST ENDCAP, ADD RIVETS	4/11/2024	TW
C	ADD RUBBER COLLAR, INTERNAL RETAINING RING AND ADJUST ENDCAPS, REMOVE 98976	5/2/2024	TW
D	ADJUST HARDWARE, HANDLES	5/24/2024	TW



ITEM NO.	QTY.	PART NO.	PART NAME
1	1	19151B	WLDT, TRAP BAR MAIN FRAME
2	2	18873	PLATE, PLASTISOL, TRAP BAR BASE
3	4	99705	BOLT, HHCS, .375-16X2, GR5, ZINC
4	8	98998	WASHER, FLAT, .375, SAE
5	10	99540	NUT, .375-16, LOCK, NYLON INSERT
6	2	19149B	PLATE, TRAP BAR BASE
7	2	19152BPL	WLDT, PLATED, TRAP BAR WEIGHT HORN
8	6	99954	BOLT, SFHHCS, .375-16x1.25, ZINC
9	6	99531	WASHER, FLAT, .375, USS
10	2	90259	DECAL, WARNING-SMALL
11	2	19175	PLATE, PL STACK 2" OD ENDCAP
12	2	99673	RUBBER COLLAR, 1-9/16" I.D. X 2-9/32" O.D.
13	2	19177	PLATE, BAR ENDCAP BACKER
14	2	98972	RETAINING RING, INTERNAL, FOR 1-11/16" ID, BL-PHOSPHATE
15	1	19185A	ASSY, STANDARD HANDLES

UNLESS OTHERWISE SPECIFIED DIMENSIONS ARE IN INCHES TOLERANCES ARE: FRACTIONS DECIMALS ANGLES ±1/16" .XX=±.02 ±1° .XXX=±.005	POWER LIFT®	
	PART NUMBER 19150B	
REFERENCE CODE PLOTB-RACK	PART NAME ASSY, RACKABLE OPEN ENDED FUNCTIONAL BAR	
CAD GENERATED DRAWING DO NOT MANUALLY UPDATE.	SHEET 1 OF 6 SCALE 1:16	REV. D SIZE A

**WITH HANDLES
WEIGHT - 68 LBS**

MACHINED AND PLATED WEIGHT HORNS

REMOVABLE HANDLE BRACKET

Ø 1-3/4" TUBE

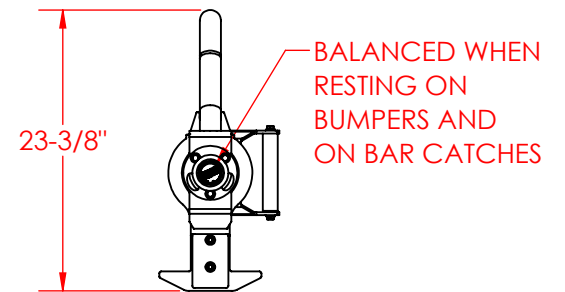
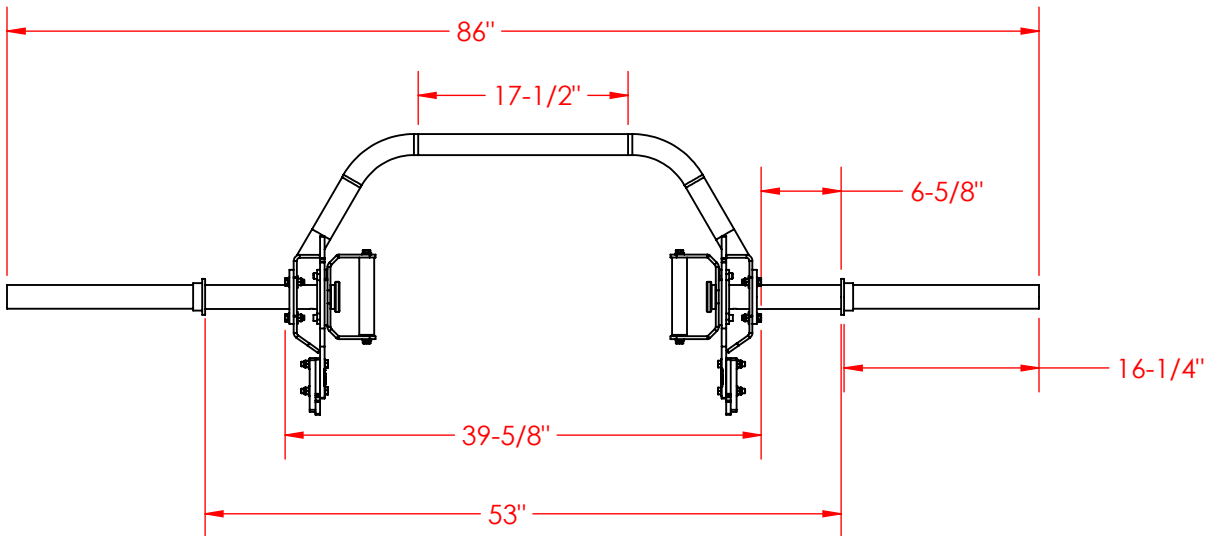
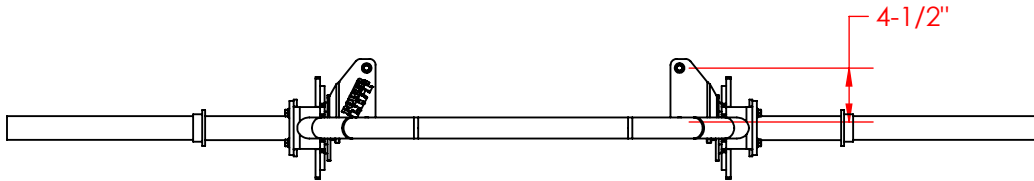
KNURLED CENTER PORTION

KNURLED GRIPS

RACKABLE SECTION

Ø 1-1/4" KNURLED, ALUMINUM HANDLES

PLASTISOL COATED FEET



UNLESS OTHERWISE SPECIFIED
DIMENSIONS ARE IN INCHES
TOLERANCES ARE:
FRACTIONS DECIMALS ANGLES
±1/16" .XX=±.02 ±1°
.XXX=±.005

POWER LIFT®

PART NUMBER **19150B**

REFERENCE CODE

PLOTB-RACK

PART NAME
**ASSY, RACKABLE OPEN ENDED
FUNCTIONAL BAR**

CAD GENERATED DRAWING
DO NOT MANUALLY UPDATE.

SHEET 2 OF 6

REV. D

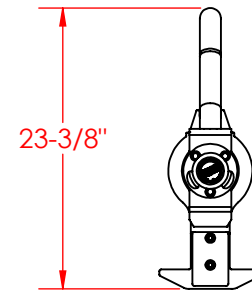
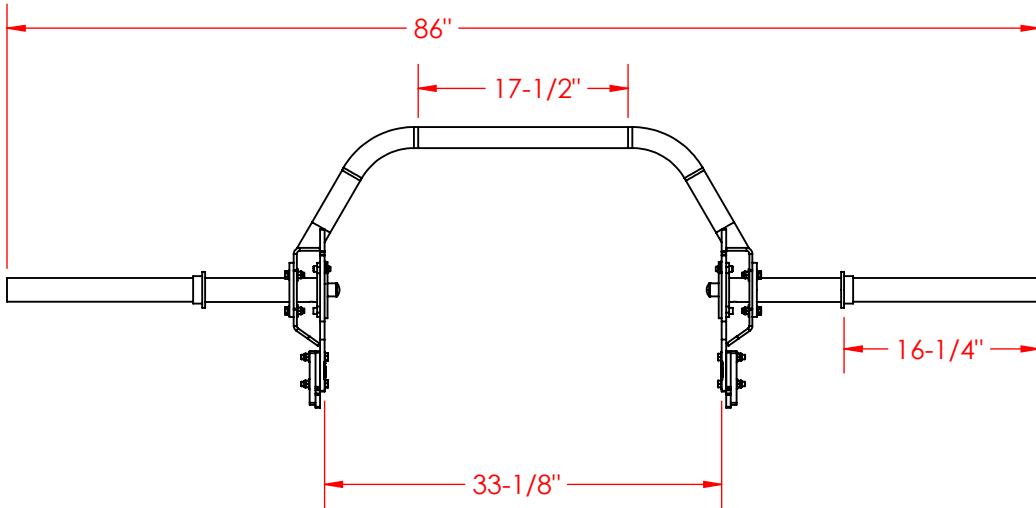
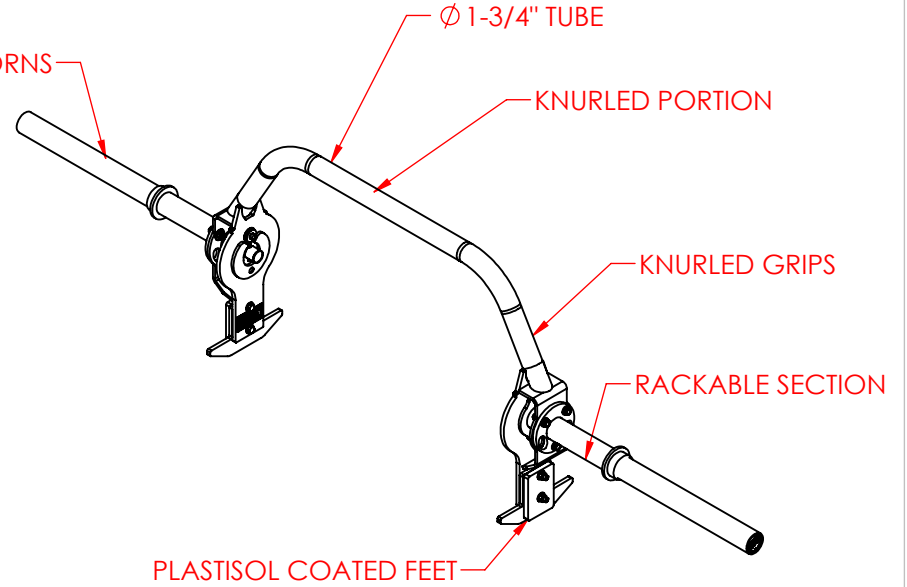
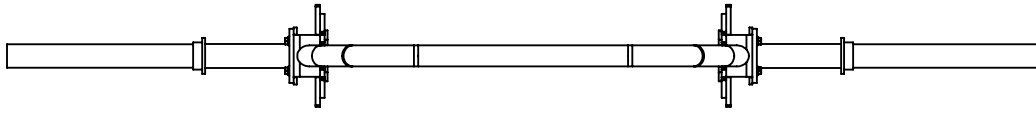
SCALE 1:16

SIZE A

THE INFORMATION CONTAINED IN THIS DRAWING IS THE SOLE PROPERTY OF POWER LIFT ANY REPRODUCTION IN PART OR WHOLE WITHOUT THE WRITTEN PERMISSION OF POWER LIFT IS PROHIBITED

**HANDLES REMOVED
WEIGHT - 55 LBS**

MACHINED AND PLATED WEIGHT HORNS



UNLESS OTHERWISE SPECIFIED
DIMENSIONS ARE IN INCHES
TOLERANCES ARE:
FRACTIONS DECIMALS ANGLES
±1/16" .XX=±.02 ±1°
.XXX=±.005

POWER LIFT®

PART NUMBER **19150B**

REFERENCE CODE

PLOTB-RACK

PART NAME
**ASSY, RACKABLE OPEN ENDED
FUNCTIONAL BAR**

CAD GENERATED DRAWING
DO NOT MANUALLY UPDATE.

SHEET 3 OF 6

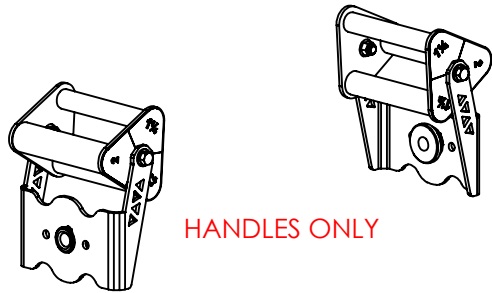
REV. D

SCALE 1:16

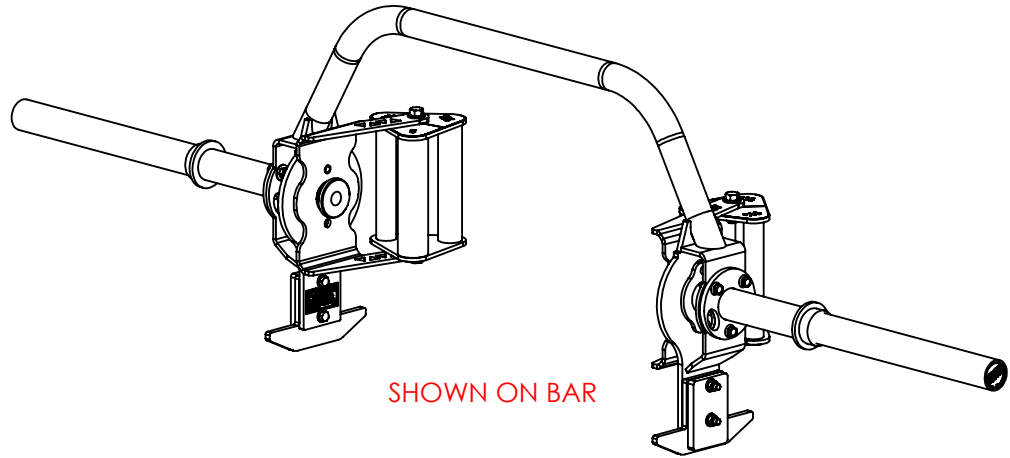
SIZE A

OPTIONAL ROTATING HANDLES (19179A)

3 ROTATING HANDLES
 BLACK WRINKLE POWDER COAT FINISH
 KNURLED ATTACHMENT KNOB WITH RETAINER
 Ø 1-1/4", Ø 1-1/2" AND Ø 2" TEXTURED GRIPS
 COLOR MATCHED FOR EASY IDENTIFICATION
 WEIGHT WITH ROTATING HANDLES = 84LB



HANDLES ONLY



SHOWN ON BAR

UNLESS OTHERWISE SPECIFIED DIMENSIONS ARE IN INCHES TOLERANCES ARE: FRACTIONS DECIMALS ANGLES ±1/16" .XX=±.02 ±1° .XXX=±.005		POWER LIFT®	
REFERENCE CODE PLOTB-RACK		PART NUMBER 19150B	
		PART NAME ASSY, RACKABLE OPEN ENDED FUNCTIONAL BAR	
CAD GENERATED DRAWING DO NOT MANUALLY UPDATE.		SHEET 4 OF 6 SCALE 1:12	REV. D SIZE A

OPTIONAL SQUAT HANDLES (19180A)

3 POSITIONS – PARALLEL WITH BAR, 25° FORWARD, 50° FORWARD

MATTE BLACK POWDER COAT FINISH

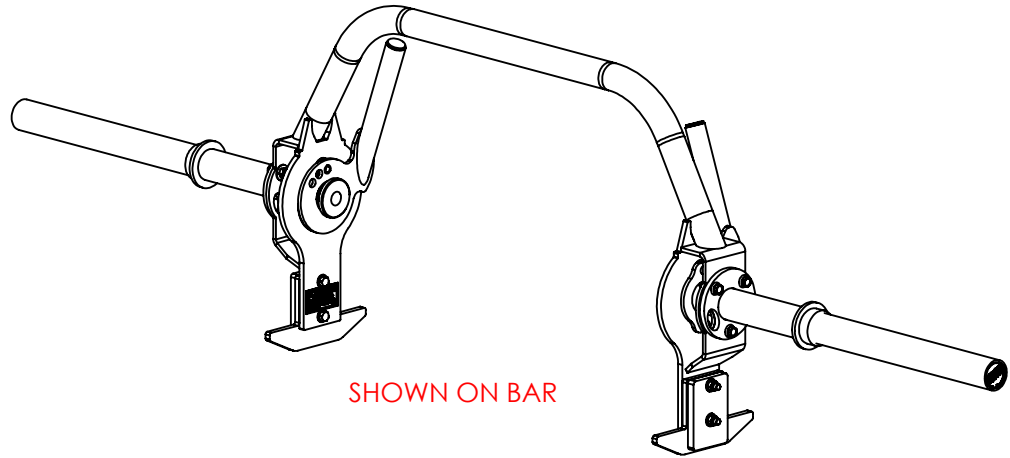
KNURLED ATTACHMENT KNOB WITH RETAINER

Ø 1-1/4" KNURLED GRIPS

WEIGHT WITH SQUAT HANDLES = 62LB



HANDLES ONLY



SHOWN ON BAR

UNLESS OTHERWISE SPECIFIED
DIMENSIONS ARE IN INCHES
TOLERANCES ARE:
FRACTIONS DECIMALS ANGLES
±1/16" .XX=±.02 ±1°
.XXX=±.005

REFERENCE CODE

PLOTB-RACK

POWER LIFT®

PART NUMBER **19150B**

PART NAME
**ASSY, RACKABLE OPEN ENDED
FUNCTIONAL BAR**

CAD GENERATED DRAWING
DO NOT MANUALLY UPDATE.

SHEET 5 OF 6

REV. D

SCALE 1:12

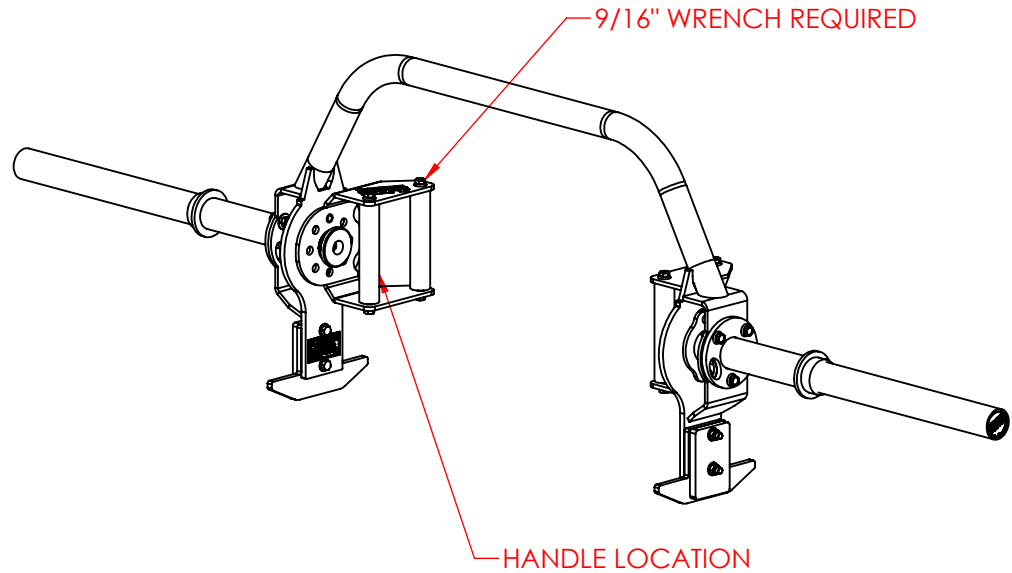
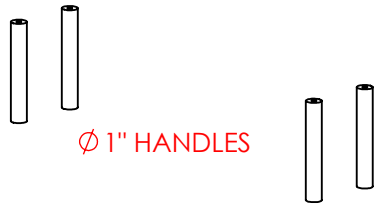
SIZE A

OPTIONAL ALTERNATIVE DIAMETER HANDLES (19181A & 19182A)

Ø 1" KNURLED, ALUMINUM GRIPS (19181A)

Ø 1-1/2" KNURLED, ALUMINUM GRIPS (19182A)

SWAP HANDLES WITH Ø 1-1/4" HANDLES ON STANDARD BRACKET
9/16" WRENCH/SOCKET REQUIRED



UNLESS OTHERWISE SPECIFIED DIMENSIONS ARE IN INCHES TOLERANCES ARE: FRACTIONS DECIMALS ANGLES ±1/16" .XX=±.02 ±1° .XXX=±.005		POWER LIFT®	
REFERENCE CODE PLOTB-RACK		PART NUMBER 19150B	
		PART NAME ASSY, RACKABLE OPEN ENDED FUNCTIONAL BAR	
CAD GENERATED DRAWING DO NOT MANUALLY UPDATE.		SHEET 6 OF 6 SCALE 1:12	REV. D SIZE A